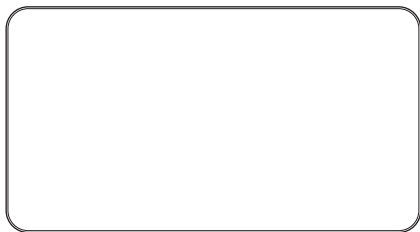


Fingerprint Authentication System

ViRDI Fingerprint Reader v2.0

Installation Guide



Manufacturer
UNION COMMUNITY Co., Ltd.



FPR02 v3.0



FOH02 / FOH02RF / FOH02SC

Contents

※ Please use a device after reading installation guide

1. Before start

- 1.1. Safety precautions 4
- 1.2. Product description 6
- 1.3. Caution before installation 8
- 1.4. System requirements 8



2. Install driver

- 2.1. Start to install software 9
- 2.2. Finishing software installation 10
- 2.3. Connecting through USB port 11
- 2.4. Begin hardware installation 12
- 2.5. Windows compatibility warning 13
- 2.6. Finishing hardware installation 14



3. Device check

- 3.1. Device check 15









4. Troubleshooting

- 4.1. Incorrect installation of driver 16
- 4.2. Assign driver path 17

1.1. Safety precautions

Warning

- | | |
|--|--|
| <p> Do not place a fire source near the reader.
It may cause a fire.</p> | <p> Do not disassemble, repair, or modify the reader at discretion.
It may cause an electric shock, fire or damage.</p> |
| <p> Handling with wet hands or allowing liquid to flow into it is prohibited.
It may cause an electric shock or damage.</p> | <p> Keep out of reach of children.
It may cause an accident or damage.</p> |
| <p> Avoid using insecticides or flammable sprays near the reader.
It may result in deformation or color change.</p> | <p> Avoid using water, benzene, thinner, or alcohol for cleaning.
It may cause an electric shock or fire.</p> |


Warning

If the above warnings are ignored, it may result in death or serious injury.







Cautions

If the above cautions are ignored, it may result in property loss or human injury.

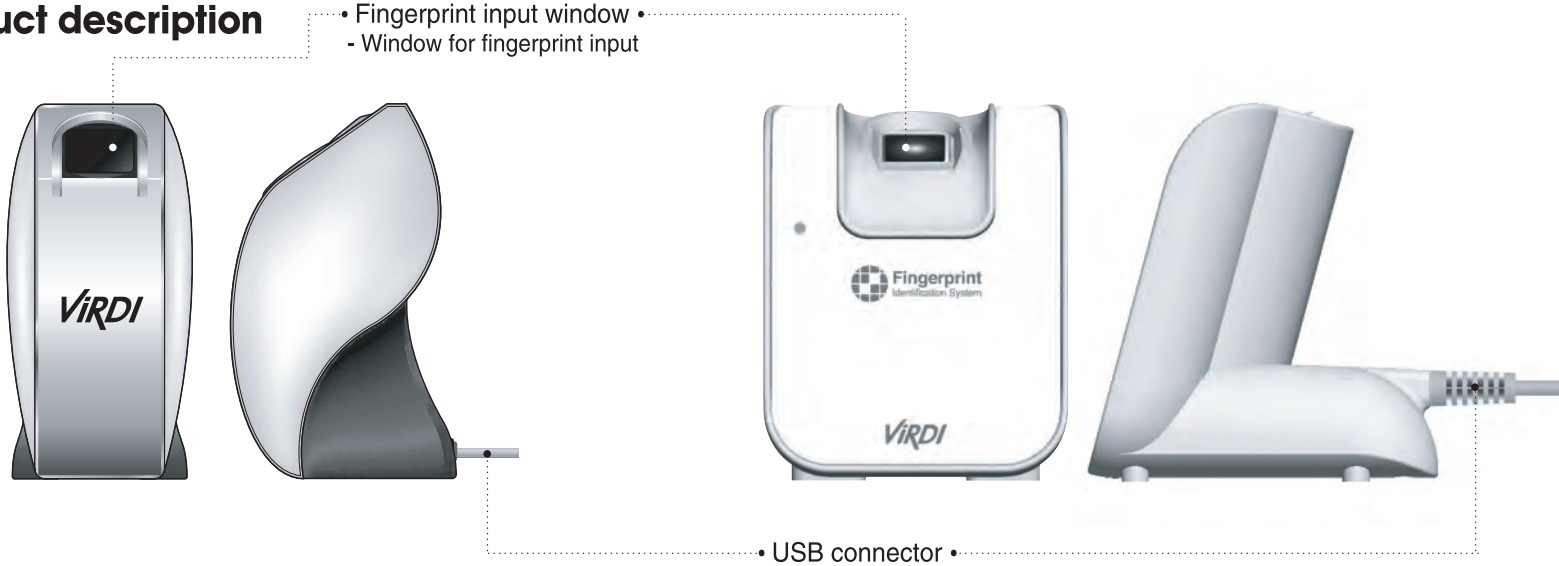
 The sign is a “Prohibition”

 The sign is that user should keep the manual

Caution

- | | |
|--|---|
| <p> Do not contaminate the fingerprint input area.
Fingerprints may not be well recognized.</p> | <p> Do not place a magnet close to the reader.
The reader may break down or malfunction.</p> |
| <p> Avoid high humidity or dust.
The reader may be damaged.</p> | <p> Avoid severe temperature changes.
The reader may be broken.</p> |
| <p> Avoid impacts or using sharp objects on the reader.
The reader may be damaged and broken.</p> | <p> Under no circumstances will Union Community be responsible for accidents or damages caused by inappropriate use of the product without referring to this installation guide.</p> |

1.2. Product description

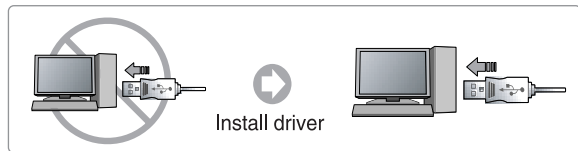


- VIRDI FOH02, FPR02v30 (USB Fingerprint reader) support for only fingerprint
- VIRDI FOH02SC (USB Fingerprint reader with smart card) support for fingerprint and smart card (13.56Mhz, Contactless type)

- VIRDI FOH02RF (USB Fingerprint reader with RF card) support for fingerprint and RF card (125Khz, Contactless type)
- (W) mark (behind the model name) indicates the fingerprint input window (sensor) is wide type

1.3. Caution before installation

- Please connect USB cable after installing driver.



1.4. System requirements

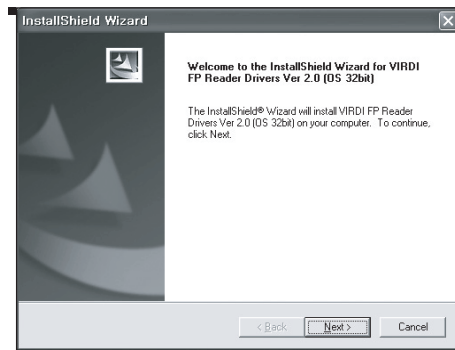
OS	Windows NT/XP/2000/2003/vista	
CPU	Minimum	PIII
	Recommend	PIV or higher
Memory	Minimum	64MB
	Recommend	128MB or higher
Communication	USB 2.0	

2.1. Start to install software

The installation process will start automatically after inserting the CD.

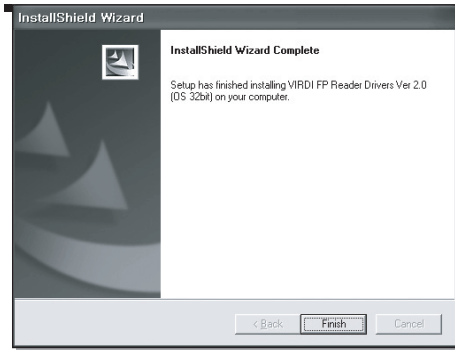
Click [Next].

(If the installation process does not start, please double click 'setup.exe' in the 'Driver' folder of installation CD.)



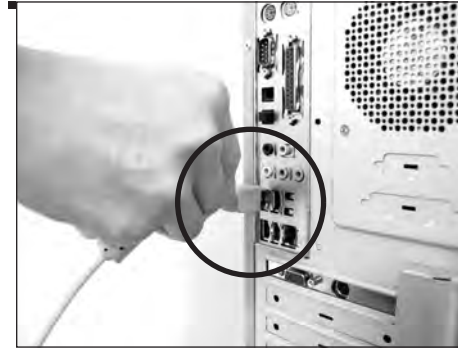
2.2. Installing software completely

Click [Finish] to end installation.



2.3. Connecting through USB port

Please connect the USB cable to the USB port on the computer as illustrated in the picture.



2.4. Begin hardware installation

Windows should recognize the fingerprint reader when plugged in. The Found New Hardware Wizard will be displayed. Click [Next] to continue.



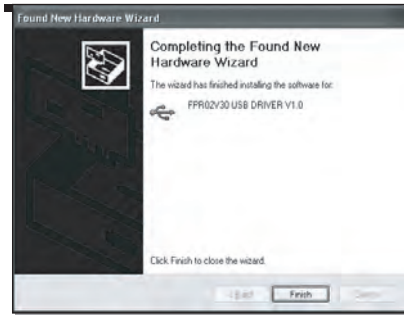
2.5. Windows compatibility warning

Please click [Continue Anyway].



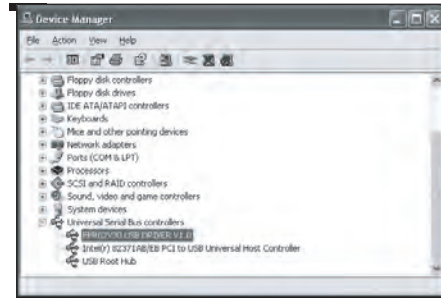
2.6. Finishing hardware installation

Please click [Finish] to close the Found New Hardware Wizard.



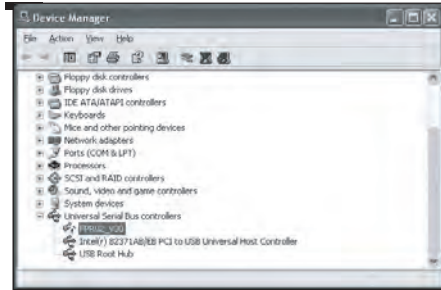
3.1. Device check

To check if the fingerprint identification device has been correctly installed, go to [My Computer] → [Control Panel] → [System] → [Hardware] → [Device Manager] and confirm the USB controller. If it shows Fingerprint Reader v2.0 as below, the fingerprint identification device has been properly installed.



4.1. Incorrect installation of driver

If the yellow exclamation mark appears in the Device Manager, please remove the device and refresh. Repeat the USB driver installation process setup again.



4.2. Assign driver path

If the setup screen does not appear automatically or the installation wizard prompts you to assign the driver path during setup, please browse and choose the folder [C:\Program Files\UnionCommunity\Usb\Drivers].

