

CFCard PC Viewer Program Manual

2009.03.23. English Version

Contents

1. CF Card Viewer Installation.....	3
2. CF Card Viewer.....	6
2-1. Playback	7
2-2. Backup	8
2-3. AVI File Converting	9
2-4. Image Capture in JPEG File	9
2-5. Print Button	10
2-6. Other Buttons	11
3. Raw Data Backup	12
3-1. Other Buttons	13
4. Backup Viewer	14

1. CFCardViewer Installation

Install the program in your PC by using the supplied CD as follows.

- Start the Operating System (Windows XP/VISTA).
- Insert the program CD into CD-ROM drive.
- Open My Computer, and then select CD-ROM drive.
- Double click Setup.Exe. The software installation will begin.

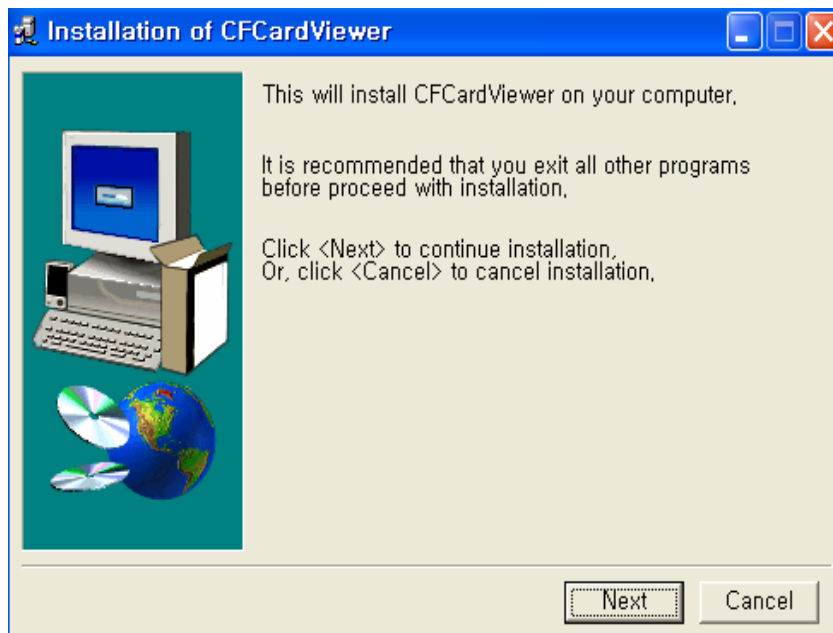


Fig.1-1 Installation of CFCard Viewer

- Click "NEXT" button in Fig.1-1



Fig.1-2 Installation of CFCard Viewer

- Click "Install" button in Fig.1-2 for installation.

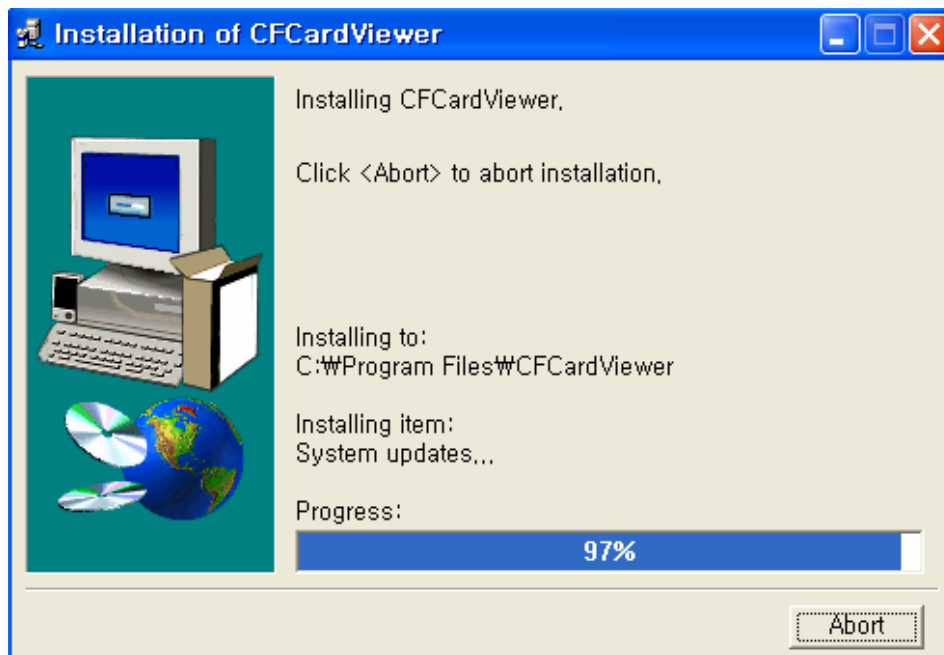


Fig.1-3 Installation of CFCard Viewer

- Click "Abort" button in Fig.1-2 to abort installation.
- Skip to next step for installation.

After installing, the CFCardViewer shown in Fig.1-4 will be displayed on the screen.

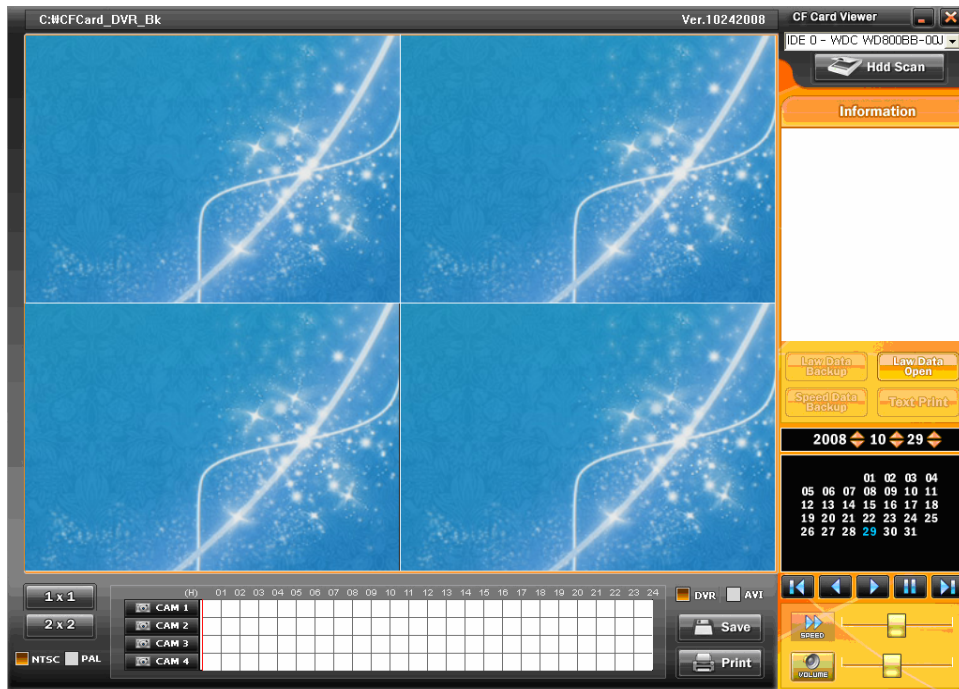


Fig.1-4 Installation of CFCard Viewer

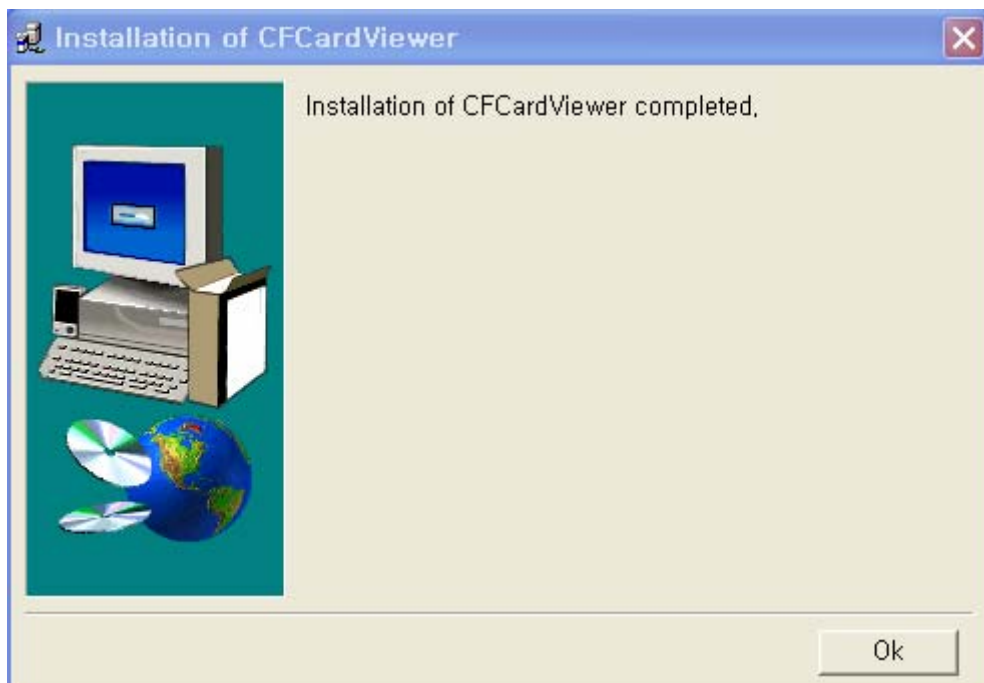


Fig.1-5 Installation of CFCard Viewer Completed

The Icon of CFCard Viewer will be created on the desktop as shown in Fig.1-6.

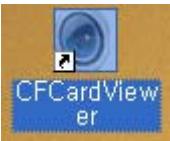


Fig.1-6 Icon for CFCard Viewer

2. CF Card Viewer

By CFCard Viewer you can view the recorded data, save it to a PC and convert it to AVI file format.

- Insert the CFCard that contains the record data to the provided USB 2.0 Card Reader.
- Connect the provided USB cable to the USB 2.0 Card Reader and PC.
- Double click the Icon of CFCard Viewer on the desktop, and then the screen shown in Fig.2-1 will be displayed.

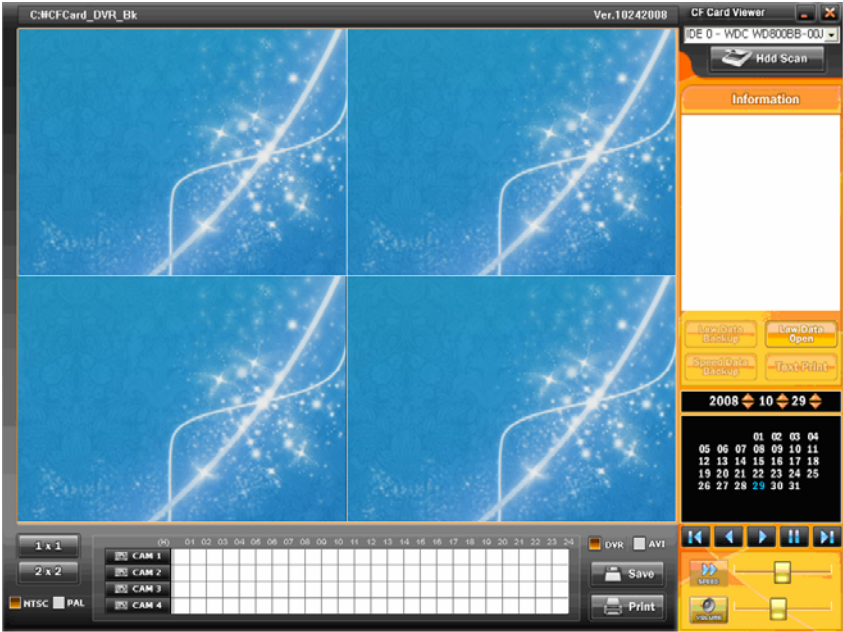



Fig.2-1 CFCard Viewer

- Click the USB device (CFCard) on the upper right hand corner of the screen to select (See Fig.2-2).
- To exit, click  on the upper right hand corner of the screen, press ESC or ALT+F4 button on your key board.

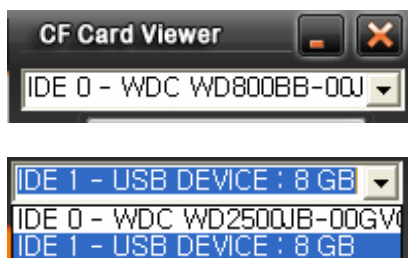


Fig.2-2 Selection of USB device (CFCard)

2-1. Playback







- After selecting the USB device (CF Card), click the DVR as shown in Fig.2-3.
- Select the Date (year/month/day) on the calendar by clicking the highlighted character in blue that contains the recorded data.
- Click the  button to playback.



Fig2-3 Selection of DVR Button

Control Buttons to Playback

-  : Click Play button to start playback.
-  : Click Reverse Play button to begin reverse playback.
-  : Click Pause button to pause.
-   : Click these buttons to view the previous frame or the next frame in still image.

Playing Speed Control: Adjust play speed up to 5 times by clicking the slider and dragging it or clicking the bar. Move the slider to the center of the bar for normal playing speed. (see Fig 2-4)



Fig.2-4 Playing Speed Control

Adjust Audio Volume: Click the VOLUME button in Fig.2-5, and then adjust audio volume by clicking the slider and dragging it or clicking the bar. It is available at the normal playing speed.

Click the VOLUME button again to make it “MUTE”.

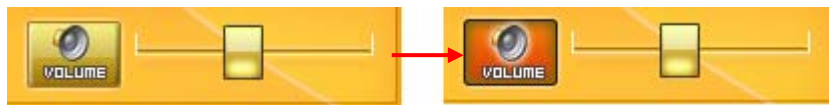


Fig.2-5 Audio Volume

2-2. Backup

- Click the Save button shown in Fig.2-6 while the system is in the playback mode (Refer to section 2-1).
- The current images on the screen will be saved in the CFCard_DVR_BK folder (C:\CFCard_DVR_BK).

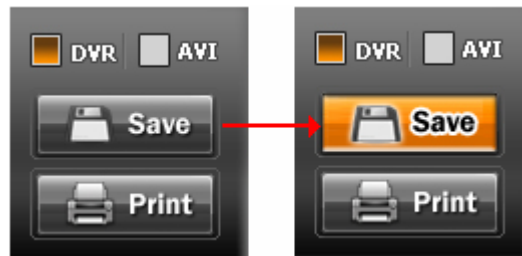


Fig.2-6 Selection of DVR/Save Button

2-3. AVI File Converting

- Click the AVI and Save button shown in Fig.2-7 while the system is in the playback mode (Refer to section 2-1).
- The AVI file will be saved in the CFCard_DVR_BK folder (C:\CFCard_DVR_BK).
- To play, double-click one of AVI files (Open Windows Explorer – click my computer – click “C” drive – click CFCard_DVR_BK folder).

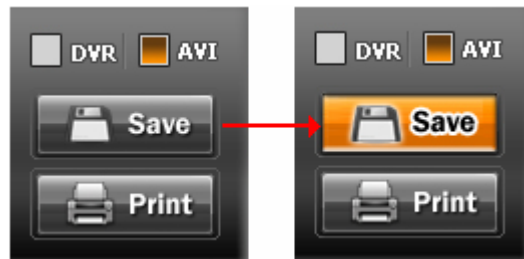


Fig.2-7 Selection of AVI/Save Button

2-4. Image Capture in JPEG File

- Right-click on the screen of the CF Card Viewer, and then the pop-up screen will be displayed as shown in Fig.2-8.
- Click “Cam 01 Image” on the pop-up screen to save the Ch 1 image in the CFCard_DVR_BK folder (C:\CFCard_DVR_BK) in JPEG file format.
- To view, double-click one of JPEG files (Open Windows Explorer – click My computer – click “C” drive – click CFCard_DVR_BK folder).

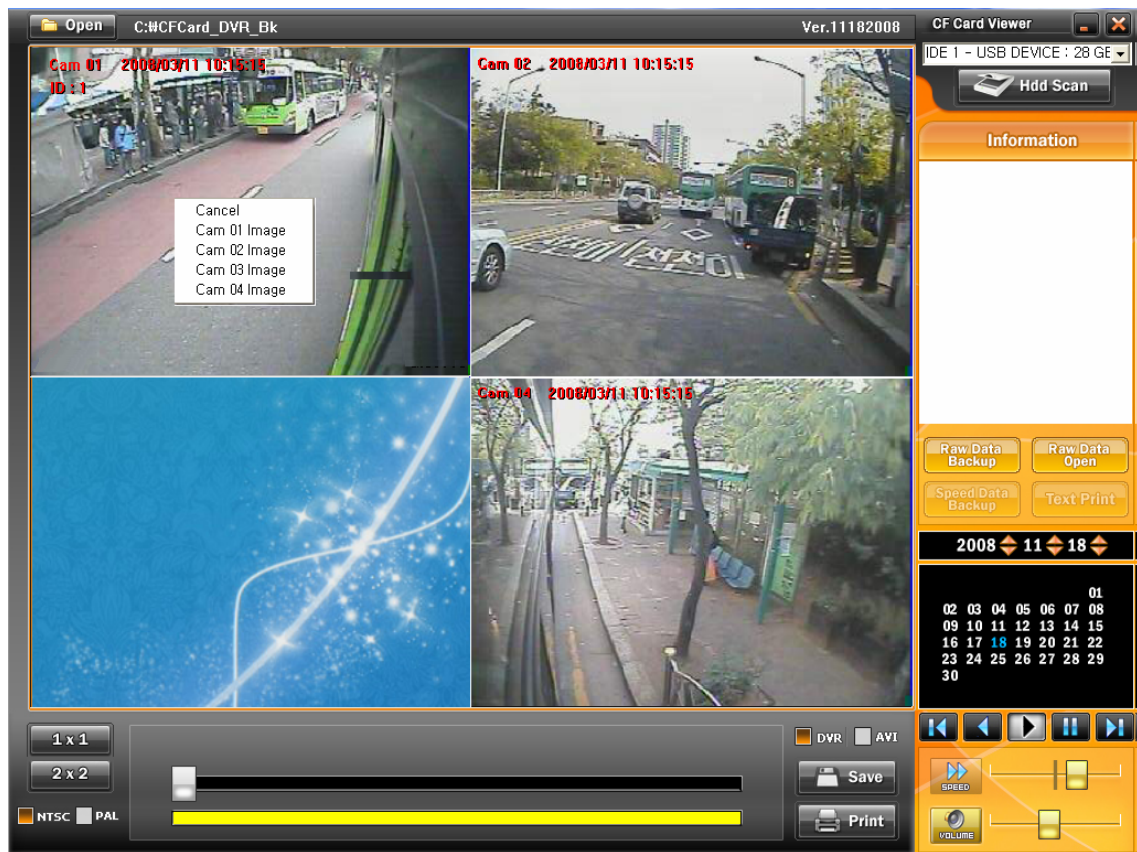


Fig.2-8 pop-up Screen

2-5. Print Button

- Click the Print button shown in Fig.2-9 on the CF Card Viewer, and then the print window (See Fig.2-10) that contains current printing time, record time and CF Card ID will display.
- Press the Print button in Fig.2-9 to print out the current images.



Fig.2-9 Print Button

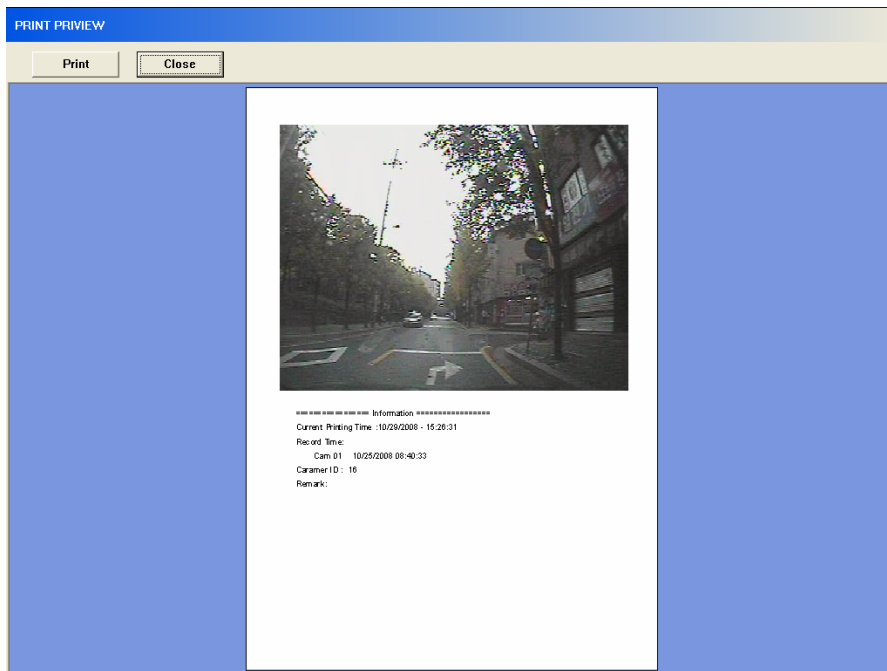


Fig.2-10 Print Window

2-6. Other Buttons



- To display a full screen, click "1 x 1" button or double-click on one of split screens.
- To display split screens, click "2 x 2" button or double-click on a full screen.



- Select NTSC or PAL by clicking depends on your country's broadcasting system (NTSC in U.S.A.).

3. Raw Data Backup

Raw Data Backup is to save all the recorded data or partial data that stored in CF Card in your PC.


- Click the USB device (CF Card) on the upper right hand corner of the CF Card Viewer to select (See Section 2 for more details).
- Click the Raw Data Backup button shown in Fig.3-1 if you wish to save all the recorded data in your PC, and then the saving progressive bar along with percentage will appear as shown in Fig.3-2.
- If you wish to save a part of the whole recorded data, select the starting time by clicking on the yellow bar that represents the whole recorded data as shown in Fig.3-3 and set the ending time by right-clicking on it (See Fig.3-4), and then click the Raw Data Backup button.
- The recorded data will be saved in the CF Card_DVR_BK folder (C:\CF Card_DVR_BK).
- **To play,**
 - Click the “Raw Data Open” in Fig.3-1, and then the Raw Data Backup Files will be displayed (See Fig.3-5).
 - Click one of the files, and then click “Open” button in Fig.3-5.
 - Click the  button to playback.



Fig.3-1 Raw Data Backup/Open button

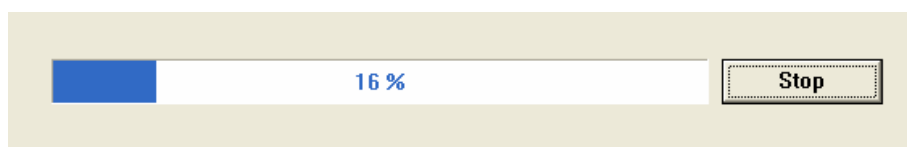


Fig.3-2 saving progressive bar



Fig.3-3 Whole Record Data



Fig.3-4 Set the Starting/Ending time

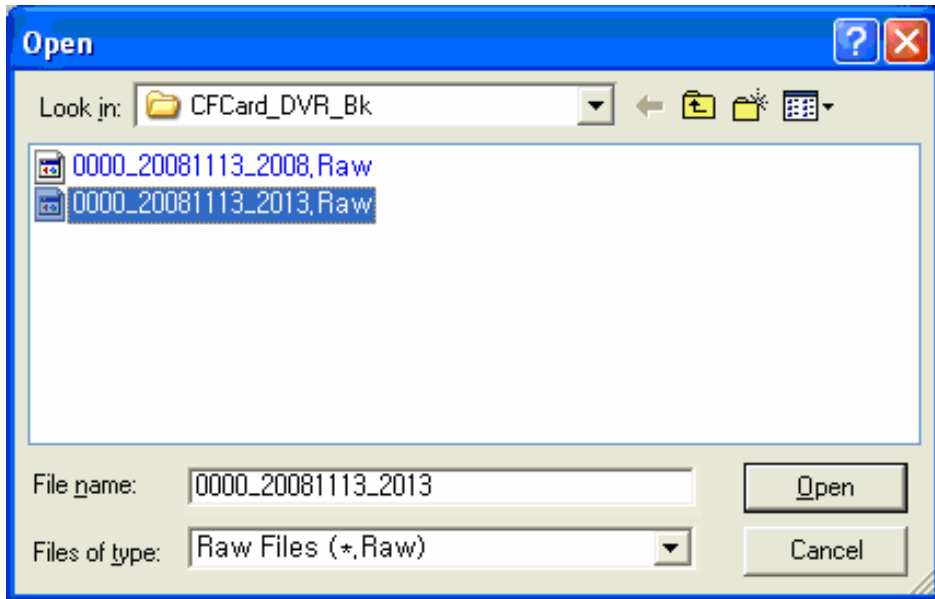


Fig3-5 Raw Backup Files

3-1. Other Buttons



The above buttons are not available on this version.

4. Backup Viewer

- Double click the Icon of Backup Viewer on the desktop, and then the screen shown in Fig.4-1 will be displayed.

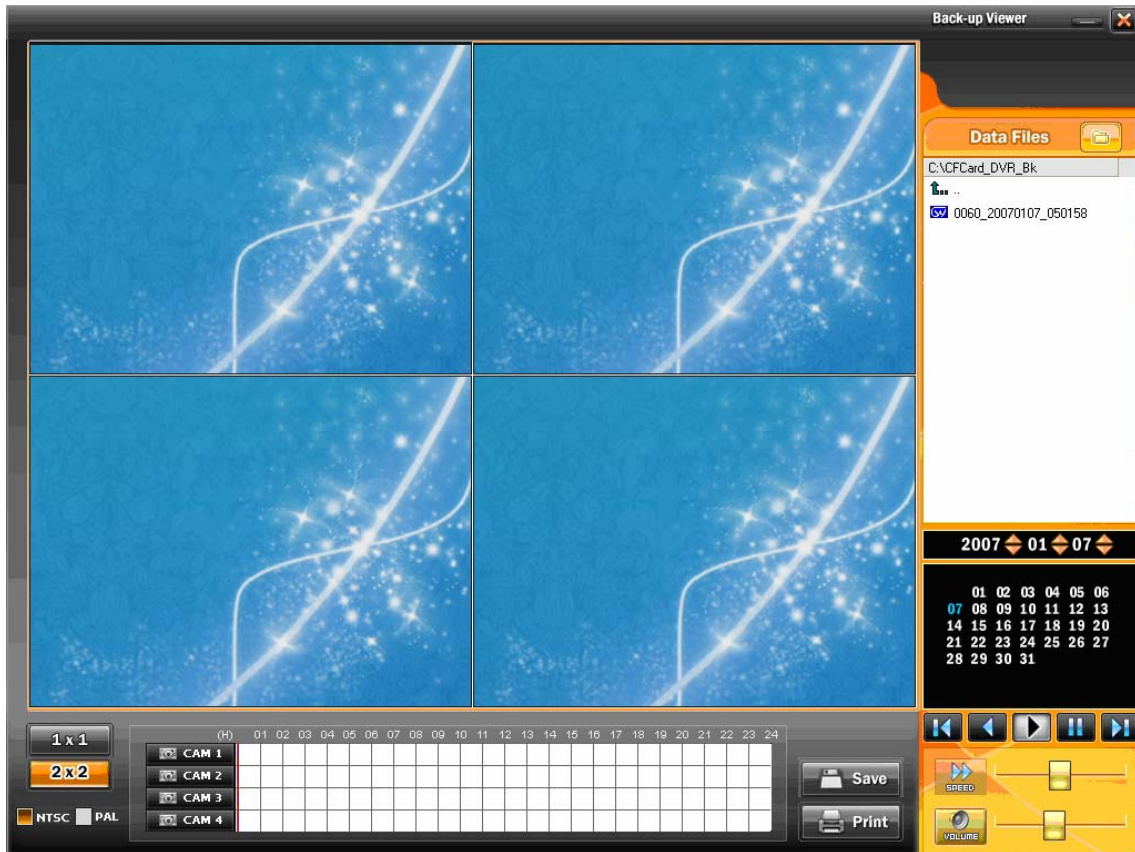


Fig.4-1 Backup Viewer

- To playback, click one of the backup files and drag & drop to one of split screens as shown in Fig.4-2.

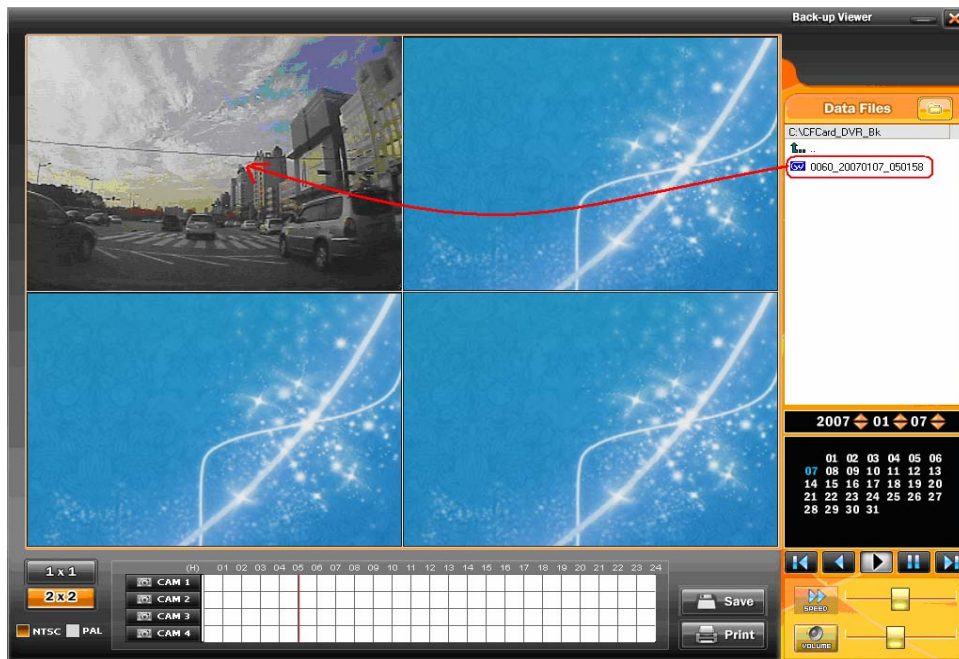


Fig4-2 Click one file and Drag & Drop to CH 1